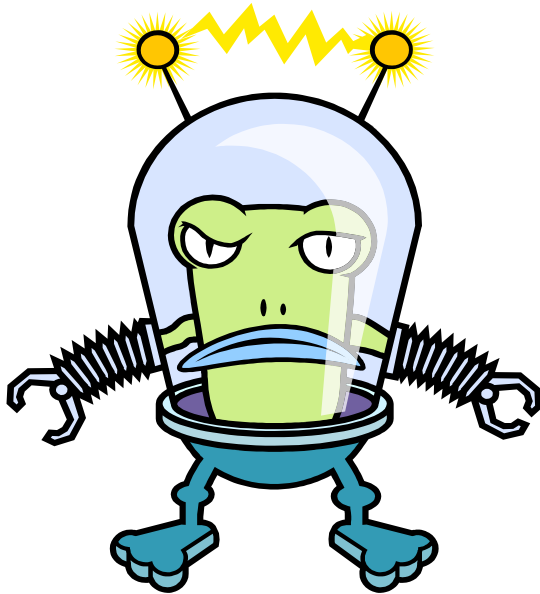


Cub Scout Galactic Trek!

2013 CUB SCOUT DAY CAMP

Camp Guidebook



Dear Cub Scouts,

Day Camp is an outdoor experience where Cub Scouts participate in individual and team sports, games, crafts, explore nature, and work on achievements, electives, and activity badges. Boys have fun in the outdoors -- that's Cub Scout Day Camp!

The Cub Scout Day Camp program is designed to teach skills and develop attitudes that make a boy more self-reliant and more at home in the outdoors. He will have fun with a purpose. The purpose is to build character while providing a memorable experience in the life of a boy. Make sure your boys get Cub Scouting at its best by attending Cub Scout Day Camp.

All Cub Scouts, from this year's Tiger Cubs to Webelos Scouts, are encouraged to attend. Boys attend Day Camp and return home each day. There is no overnight camping. Cub Scouts participate in outdoor activities built around the 2013 camp theme - Galactic Trek. So you can expect boys to stretch their minds and their muscles as they enter our space adventures!

Day Camp is a program of the Great Southwest Council, Boy Scouts of America, and is made available through each of the council's districts. Camps meet the standards of the National Council, BSA, and are inspected annually to assure you of a high quality, successful camping experience. Day Camp is committed to a policy that all persons shall have equal access to its facilities, employment, safety, and programs without regard to race, creed, color, national origin, age, or handicap.

For specific details on your District's Day Camp contact your District Executive or visit our web site at:

www.gswcbsa.org

Rio Grande 1

General Information

PLEASE READ THIS ALL THE WAY THROUGH SO YOU KNOW WHAT IS NEEDED FOR DAY CAMP!

TAKE OFF SCHEDULE

Day Camp will be held June 14- 15 at the LDS Rio Rancho Stake Center- 304 Loma Colorado and Loma Colorado Park. Closing ceremonies will be held in Rio Rancho High School's gym starting at 2:30 on Saturday. Families are invited to closing ceremonies.

Ground zero rules

On the opening day of camp, please have Scouts arrive **EARLY** so they can be issued T-shirts and assigned to their dens promptly. Check in time begins at 8:30. Opening ceremony will begin at 9:00 each day. Boys need to be checked in and out daily. Ending time is 4:00 each day.

Attendance will be checked as boys arrive each morning. We will call parents of registered campers who are not checked-in by Opening Ceremony; please inform the staff of any expected absences or late arrivals. Boys should have no reason to leave Camp during the day, but if necessary they must be under the supervision of an authorized adult. Boys and parents must check in and out with Camp Headquarters. **Parents must notify Camp Headquarters in writing if another adult is permitted to pick-up their Scout from camp.**

Scouts must be picked up at 4:00 each day. Pack contingents must remain at camp until each of their boys has been checked out.

ASTRONAUTS

Dens will be comprised of multiple packs based on rank and cub scouts attending. Each Den will decide on a name for their team. The dens will also perform den yells, songs and skits. **THERE IS NO TIGER CUB PROGRAM FOR RIO GRANDE 1.**

The buddy system is to be used for all Day Camp activities whenever boys have to be away from the rest of the den.

LOADING DOCKS

Each den will have its own area for its Den Site. This is where boys will check in and out each day, store and eat their lunch, etc. Each den will create its own flag, cheer, and other den spirit items.

SPACE SUITS

A Day Camp T-shirt will be provided to each boy as part of the camp fee if paid by April 19th. After this date, boys will be given a wrist band to identify them as a camper. This shirt or wristband, along with weather-appropriate clothing, will be the official Day Camp uniform and must be worn to camp each day, dirty or clean. **Boys need sturdy shoes, hats, water to drink, sunscreen and a sack lunch on Friday.** Please label all items with the boy's name. A small daypack/backpack is very helpful.

DOCKING STATIONS

Camp-wide ceremonies are held to open and close camp each day. Please assemble by dens at the appointed time.

THERE IS NO TOT LOT AVAILABLE

EXPLORING STATIONS

Dens will rotate through a variety of stations each day: Activities may include crafts, sports & games, Scout Skills, BB-guns, Archery, and special events.

MILKY WAY BAR

Boys and leaders need to provide their own snacks. A sack lunch is needed on Friday. Lunch will be provided on Saturday for all boys, adult volunteers and staff. Avoid menu items that spoil rapidly. **There is no provision made for refrigeration of lunches.**

IF YOU CHILD HAS A FOOD ALLERGY, please make sure the den leaders know this. Please put it on the medical form. If your scout has a Gluten Free diet or other severe allergies they need to bring their own lunch both days.

Den leaders are encouraged to bring a cooler and ice to store snacks and lunches.

Day Camp will host some form of entertainment or special presentation for the Cub Scouts after lunch. This is to be a rest period for the Scouts.

ASTRONAUT FEES

Day Camp is self-supported and staffed with volunteers. The fee provides for staff training, program materials, craft items, patches, T-shirts, insurance, and many other things necessary to conduct a successful Day Camp. Rio Grande 1 – Cost is \$40 if paid by April 19, after there is a \$10 late fee. There is a 10% discount if your pack held its Friends of Scouting presentation and reached the pre-established goal for the unit. There is no guarantee that boys will receive a T-shirt or other items if they register after April 19. .

CAPE CANAVERAL

No boy should be denied camp because of finances. A limited number of Camperships are available. Normally, up to 50% of the fee may be waived. Contact your Pack's Day Camp Coordinator if you have need.

NO GO FOR LAUNCH

If unforeseen events prevent attendance, requests for refunds must be submitted **in writing by the pack** before the end of the first day of camp. Requests will be considered on a case-by-case basis. Fees are transferable to other boys. Requests received less than 3 weeks before camp are subject to a 25% reduction to cover costs incurred. Submit requests to the Council Program Director.

FLIGHT CREW AND LAUNCH CREW

The Day Camp Staff - Launch Crew - will direct all the events and major activities of Day Camp. Each Den will be led by its own volunteer adult Leader - our Flight Crew/Den Leader. **EACH PACK MUST PROVIDE ONE LEADER FOR EVERY FOUR BOYS ATTENDING CAMP.** These leaders may be regular pack leaders or parent volunteers. Ideally, the adult volunteer will serve for the entire camp, but packs may change Leaders each day if necessary. **Adult Volunteers/Den Leaders are encouraged to attend orientation and training.** Please visit our web site at www.gswcbbsa.org for specific dates

Rules and Regulations

BSA POLICY

The Boy Scouts of America has firm policies regarding a number of situations that could occur in camp. These are not debatable. **Any staff member, adult volunteer leader, or camper unwilling to abide by these policies will not be permitted to remain in camp.**

Alcohol: Possession, consumption, or being under the influence of alcohol, including beer, will not be tolerated at programs of the Boy Scouts of America.

Narcotics and Dangerous Drugs: Possessions, use, or being under the influence of narcotics or dangerous drugs, including marijuana, will not be tolerated at programs of the Boy Scouts of America.

Illegal, Immoral, or Unacceptable Acts: As a character building organization caring for other peoples' children in camp, illegal, immoral, or other activities generally considered as unacceptable by society have no place in the Boy Scouts of America.

Child Abuse: It is mandatory that any staff member or volunteer report to the Camp Director any actual or suspected case of child abuse or neglect immediately. The Camp Director will then notify the Scout Executive.

When an individual is suspected of having committed an act of unacceptable nature, the Camp Director should be immediately notified. If the matter is of a serious nature, the Scout Executive will be notified. Depending on the circumstances, law enforcement authorities may also be notified.

MEDICATION

All prescription medication must be submitted to the Camp Medic for safekeeping and storing. Exceptions must be approved by the Medic and include inhalers, EPI pens, insect sting kits, medication to control heart problems, and other medication that is required immediately in an emergency. All medications will be returned at the end of each day's session.

FIRST AID - SICK BAY

A First Aid Station is located in camp and is staffed by personnel trained to handle minor accidents and illnesses. Special arrangements for the treatment of more serious cases have been made with local facilities. All medical emergencies must be reported to the Medic immediately.

COMMAND'S DECISIONS

We understand that, at times, things do not always go the way we would like to see them and that we are not perfect. Day Camp has an open door policy regarding complaints, but we ask that proper channels be used when available. Please address all complaints, concerns, and suggestions to your Den Leader, the Program Director or the Camp director.

ALIEN EXPLORES

Visitors are always welcome at Day Camp, but must check-in and check-out with Camp Headquarters - Command Central.

COMMUNICATION SIGNALS

A telephone is located in camp for official business and emergency use only. Please do not allow your scout to bring their cell phone to camp. The phone can be a safety issue on the ranges or could get lost. Please leave cell phones at home. Parents who need to contact camp or have questions after hours should call the Camp Director – Judy Yocom 505-331-7241 riograndeday1@yahoo.com

PERSONAL GEAR

Leaders should encourage all Scouts to mark their possessions with their name and pack number. The Camp is not responsible for lost or stolen personal property. The lost and found box will be located at headquarters. Money and other items are to be turned-in when found.

MEDICAL FORMS

Please use the Official Medical form on the Council website, www.gswcbbsa.org. Medical information Parts A and B are **REQUIRED**, as well as a copy of your insurance card (front and back) updated within 12 months of the camp, and signed by a parent or guardian. Turn medical forms and copies of insurance cards into your Day Camp Coordinator. **No boy may attend camp without the medical form. Registration items will not be accepted without a valid Medical Form!**

EXPLORATION READINESS

Before registration deadline: Return your pack reservation form, individual boy registrations, adult volunteer registrations, **MEDICAL FORMS** and fees to the Council Service Center by Monday, April 19.

NOTE: Packs accepting late registrations must ensure that Leader/boy ratios are maintained. After turning in the Pack Roster, telephone contact with the Day Camp Director is required to make updates or changes regarding attendance of boys or Leaders. Pack must also ensure that parents or guardians understand the late registration fee and exactly what their boy may or may not receive at Day Camp.



Pack Day Camp Coordinator Responsibilities

The pack committee or Cub Master should appoint a responsible adult to serve as your Pack Day Camp Coordinator. The Pack Day Camp Coordinator's responsibilities include the following:

Camp Leadership: Secure leadership for Day Camp. Each unit must have one adult leader (must be 21 years or older) for every **FOUR** boys in camp. Ideally, leaders stay all week, but you may rotate leaders daily as long as you maintain leadership ratios. Packs are encouraged to recommend other adults to serve on the Day Camp staff.

Camp Fees: The pack should collect fees from each family and submit one pack check with registration forms.

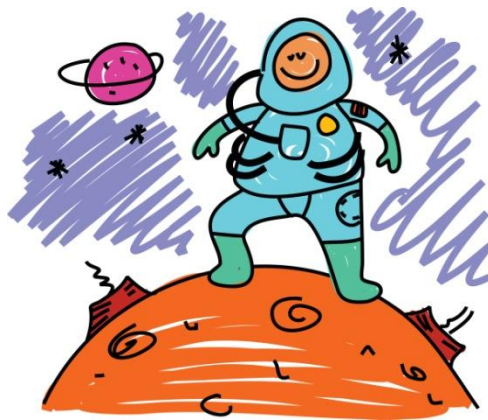
Parent Participation: Don't keep camp a secret! Share your plans and problems with your parents. They can't help if they don't know what needs to be done. Let them know your plans early. They have family plans to make too. Keep them informed through regular parent's nights, camp update bulletins, and/or parents' camp plan-o-rees. Be sure they're aware of Camp family activities.

Advancement: Boys will have the opportunity to work on many achievements and electives while at

camp. A record of what each boy has accomplished will be given to adults on the last day of camp. In addition, a list will be posted on the Council website after camp.

Promotion: Have fundraisers to help boys earn money for camp fees. Provide unit scholarships to boys who do something special. Make sure families needing help are aware of the camperships available through the council. Invite camp staff members to visit your unit. Talk about camp plans with boys and parents often. Conduct a special Parent's Night presentation. Have a camp bulletin board at every unit meeting with pictures, sign-up lists, programs, and plans. Work with Tiger Cubs who will be joining the unit in the spring.

Registration: Review and submit all boys registrations, adult volunteer registrations and **MEDICAL FORMS ON TIME** with appropriate fees. Communicate with the Day Camp Director to see that everyone is accounted for and there is sufficient leadership for your pack's boys.



Day Camp Frequently Asked Questions

What is Cub Scout Day Camp?

Cub Scout Day Camp is an adventure filled program that happens at several local locations throughout the Great Southwest Council. Volunteer Camp Directors and staff plan a week packed full of fun and excitement. Day camps are designed to meet the needs and interest of Cub Scouts by providing great age appropriate activities and daily programs. Our traditional activities include Archery & BB instruction, Nature, Sports, Crafts, Games and Scout Skills.

Who can attend Cub Scout Day Camp?

Cub Scouts... Any boy registered in Cub Scouts entering grades 1, 2, 3, 4, and 5 in the fall of 2013 is eligible to attend day camp. Parents are needed to volunteer for the week to ensure an adult is present for every 4 boys in attendance.

What does Day Camp Cost?

Camp Fee is different for each camp. Fee range from \$40.00 to \$75.00 per scout depending on which camp your son attends. Fee includes one Day Camp T-Shirt, Day Camp Patch, all program supplies and materials and a great time at camp! Camp Scholarships are available for youth.

How do I register?

You need to register through your pack. This ensures that there are enough adult volunteers available to help with your pack's boys. In order to guarantee your spot and your T-Shirt, packs must register by April 15.

Who runs Cub Scout Day Camp?

Each camp provides a trained staff that runs the daily program and events. Scouts are organized into dens run by volunteer parents/leaders. The Camp Directors at each camp are Nationally Certified by the Boy Scouts of America's National Camping School.

What do we eat?

Lunch! - Each day, campers provide their own lunch. At our camp locations refrigeration is not always available so we recommend that you pack lunch items that are nonperishable.

What do I wear and bring to camp?

The Day Camp uniform will be a T-shirt provided by the camp on the first day. If you register late and don't receive a t-shirt, you will be given a wrist band to wear to identify you as a camper. Scouts should wear sneakers & socks (no sandals), and shorts. Scouts also may bring a small backpack to carry their water bottle, hat, and sunscreen.

How are the camps regulated for safety?

Our day camps are supervised by Boy Scouts of America National Camping School certified directors, health officers are on duty while camp is in session, and the camps operate under the safety and program standards of the Boy Scouts of America.